

EUROVAC



DOWNDRAFT TABLES FOR WELDING AND GRINDING

EXPERIENCE THE ULTIMATE IN POLLUTANT CONTROL

Our line of downdraft tables offer a hands-free method of capturing and removing dangerous dust and fumes from the technician's workspace right at the source.

Ideal for applications such as:

- Welding processes
- Sanding and buffing
- Batching
- Powder and light dusts
- Light smoke



EUROVAC DOWNDRAFT TABLES

Any metal transforming facility includes welding, grinding or sanding on metals. These processes create harmful pollutants and volatile dust, which contaminate the technician's breathing zone.

Eurovac offers a wide variety of hand-free downdraft suction tables to help keep the workspace environment clean. These superior solutions were created to replace the typical articulated fume arms for source capture, allowing the technician to concentrate on the job at hand. Or experienced engineers can help design the right unit for any application and workspace, ensuring all meet the strict OSHA standards.



Features Include:

- 12 and 14 gage painted steel cabinet
- Perforated work surface
- Quiet direct drive fan
- Sealed access door to filters and fan
- High efficiency cartridges
- Pulse jet cleaning of cartridges
- Removable dust collector drawer
- Removable aluminum spark trap filters for welding and grinding applications

Typical Applications:

- All welding processes
- Grinding dusts and most airborne dusts
- Polishing, printing, buffing
- Powder mixing and batching

Optional accessories include:

- Back drop and side panel on hinges for "tunnel" effect into work surface
- LED light kit (explosion proof available)
- Magnehelic pressure gages
- Knee overhang for workers to sit
- Custom work surface for precious alloys protection
- Extra large casters with foot brakes for easy displacement of unit
- Customized perforated work surfaces for special applications
- Reinforced structure for heavy objects laying on work surface
- Custom colors
- Outlet silencer
- Carbon after filter

TYPICAL DESIGNS AND USAGE WITH EUROVAC DOWNDRAFT TABLES



*30" x 36" bench with protective mat
for sensitive alloys*



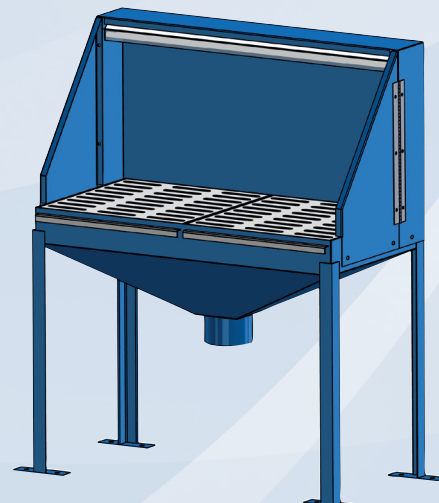
*36" x 96" open perimeter bench
for walk around purposes*



*36" x 72" bench with slotted backdrop
for backdraft suction*



*36" x 72" bench with knee overhang,
back drop and side panels*



*24" x 48" bare table for
connection to a central dust collector*

EUROVAC STANDARD DOWNDRAFT TABLE MODELS

Model	Work surface	Air volume	Motor	Downflow (avg)	Weight
DDT-2X3-D1201000	7.50 Sq. Ft./1.70 Sq. Mt	1250 CFM/590L/S	2 HP/1.5 Kw	300 FPM/1.5 MPS	280 Lb/130 Kg
DDT-3X4-D4603000	10.67 Sq. Ft./99 Sq. Mt	2000 CFM/945L/S	3 HP/2.2 Kw	330 FPM/1.7 MPS	450 Lb/205 Kg
DDT-3X6-D5753000	16 Sq. Ft./1.48 Sq. Mt	2750 CFM/1300L/S	5 HP/3.7 Kw	300 FPM/1.5 MPS	550 Lb/250 Kg
DDT-4X6-D4603000	22 Sq. Ft./2.04 Sq. Mt	3500 CFM/1650L/S	7.5 HP/5.5 Kw	290 FPM/1.4 MPS	750 Lb/340 Kg
DDT-4X8-D4603000	29.33 Sq. Ft./2.72 Sq. Mt	5000 CFM/2360L/S	10 HP/7.5 Kw	290 FPM/1.4 MPS	1100 Lb/500 Kg

Note: Models described above are for references. Eurovac also offers custom sized work benches with less or more air volume and different motor outputs.

Cartridges	Quantity	Cartridges efficiency	Micron size	%
DDT-2X3-D1201000	1	Cellulose (MERV 11)	1 to 3	80 to 90
DDT-3X4-D4603000	2	Cellulose Nanofiber (MERV 15)	1 to 3	85 to 95
DDT-3X6-D5753000 & DDT-4X6-D4603000	3	Polyester with PTFE (MERV 16)	1 to 3	95 +
DDT-4X8-D4603000	4	HEPA Media (MERV 17)	.3 +	99.97

Note: Contact your representative for proper cartridge selection. Filter surface and number of pleats vary as per model.

DOWNDRAFT WORK BENCHES GENERAL INFORMATION

Motors	TEFC 3500 RPM	Compressed air requirement	Min 60 PSI Max 90 PSI	Available work surfaces	Open steel grate or perforated fiberglass
Control panels	UL/CSA NEMA 4/12	SCFM per pulse	5 to 7	Steel finish	Powder coat pain
Steel cabinets	11 and 14 gage	Max operating temperature	275 F 135 C	Db rating	68 to 75

Downdraft work benches must not be used for capture of explosive or toxic gases or harmful vapors.

Safety notes:

- In order to minimize fires and/or explosions, empty dust drawer every day if possible and check filter status as often as possible
- Eurovac may require dust samples if the customer cannot ascertain the origin and type of pollutants to be filtered
- The dust collector is not to be used for any other types of dust than for which it was designed and/or specified
- The downdraft work tables described in this brochure may not be used for highly reactive dust such as aluminum (Eurovac will recommend wet type scrubbers for such application)

***For every need and budget,
trust the dust collection specialists.***

For more information, contact Eurovac:

CANADA and USA
Toll-Free 800-265-3878 / Fax 416-744-8079
44 Milvan Dr., North York, ON M9L 1Z3
5927 Center Rd, Unit 3, Valley City, OH 44039
www.eurovac.com

EUROVAC