

EUROVAC

SHAKER TYPE DUST COLLECTORS

- School arts and crafts classes
- Small to medium size woodshops
- Plastic transforming facilities
- Powders and light dusts
- Food or pharmaceutical industries



Eurovac's line of motorized or manually activated shaker cleaning dust collectors have been proven highly efficient on large dusts and chips as well as on very fine particles. The modular concept design allows for single or multiple filter vessels and requires a limited footprint for interior or exterior installation.

Source Capture Equipment
and Dust Collector Manufacturer

Product Description:

All material processing or transformation such as wood products, plastics, alloys or even powder handling/batching will create harmful airborne dusts which may get into the workers breathing zone. At *Eurovac*, our engineering team looks at different solutions which will help in greatly reducing contaminants coming from the activities listed above. The shaker type unit is only one of the extended family of dust collectors available. The filter envelope captures 95% to 99% of particles in sizes ranging from 5 to 10 microns allowing clean air to be recycled back in to the plant.

The results are low operating management costs since a makeup air unit (MAU) may not be required. The motorized or manually operated shaker dislodges the dusts trapped on the filter surface which decanter into the dust bin. Usually, the exhaust fan and optional silencer are set on top of the unit (for motorized version) allowing even more space saving features. The manual shaker type comes with a self cleaning AMCA type B radial blade fan which operates on positive pressure into the filter bag. Filter bag will help in reducing noise level and a fan outlet silencer is also available for this type of system.

Features Include:

- 10 and 14 gauge powder coat painted steel cabinet
- Highly efficient multi pocket filter with smooth surface for minimal face load
- Fully automatic control panel for shaker cleaning upon unit shutdown
- Powerful shaker motor with oscillating pattern (motorized PDC version)
- Budget minded manual shaker action (manual COL version)
- Single to multiple dust storage drums
- Vessel shipped fully assembled with filters installed
- Lifting lugs attached for easy handling upon installation

Optional accessories include:

- Engineered explosion vents for combustible dust filtration
- Spark detection and extinguishing systems
- ATEX certified blowback dampers (isolation valves)
- Fast action abort dampers
- Sprinklers
- Fan sound insulation plenums or silencers
- AMCA type B and C spark proof fans for reactive material or dusts
- Open type vessels with manual shaker (interior installation only)
- Low profile hoppers with dust bins
- Side mounted fans for low ceiling facilities or overhang roof
- Variable Frequency Drives
- Rotary airlocks for large amounts of dust discharge in hopper
- Three (3) to ten (10) cubic yard containers for added dust storage
- Round bag filters (4" to 8" in diameter) instead of multi pocket envelopes
- Safety bag or HEPA after filters
- Custom colors to match building exterior or environment

Typical designs and usage with Eurovac shaker type dust collectors



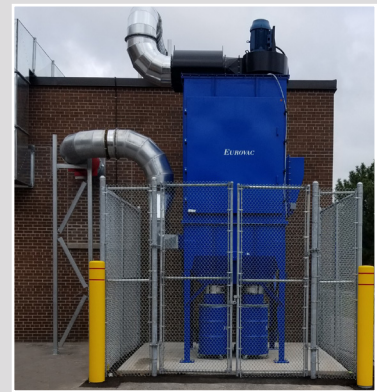
Explosion vent with deflector to divert blast upward thus minimizing possibilities of personal injury or property damage



Stainless steel rupture disk with weather cover for ST2 type dusts



Rigid clamp connection from hopper to drum lid. Drum dollies on casters for easy movement of drums when full



Multiple drum configuration with drum dollies for easy movement when full of dusts and debris



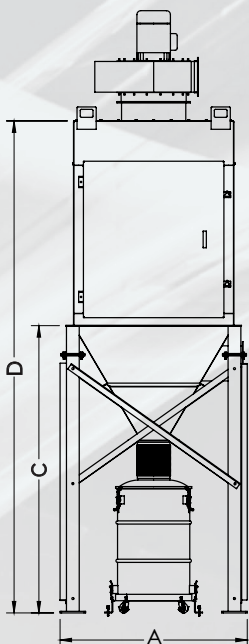
Fan outlet silencer to recycle clean air back in to the facility. Isolation valve (red) to prevent fireball from coming back thru the main ductwork



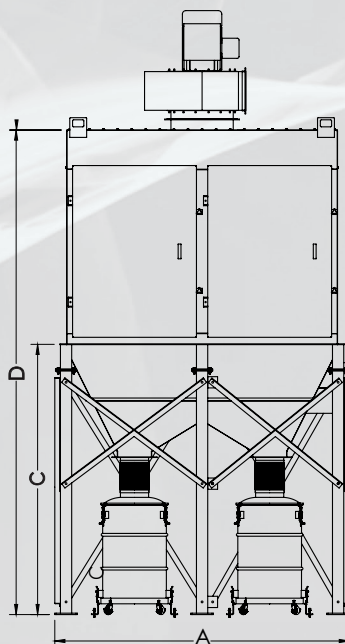
Manual shaker open type collector with side floor mount radial blade fan and low profile canister (interior installation only)



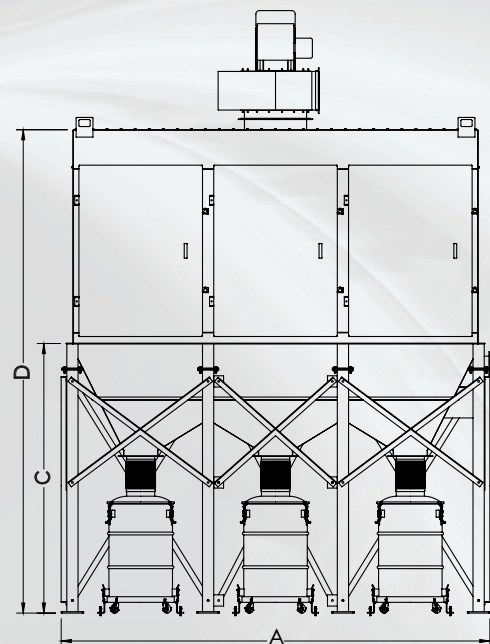
PDC 260 to PDC 570



PDC 700 to PDC 1140

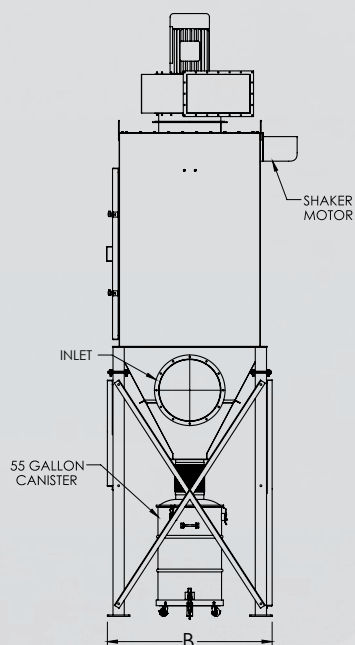


PDC 1350



Note: Dimensions may vary slightly to fan motor size, sound enclosure and explosion relief vent. Factory will supply technical drawings for review.

Note: Dimensions or figures in charts below were rounded to the closest decimal or fraction. Accurate figures will be available with submittals.



Model	Dimensions (in/cm)				Weight (W/O Motor, Enclosure & Relief Vent)	Filtration surface	55 Gal/210L Canister
	A	B	C	D	(lb/kg)	(sq.ft./sq.mt)	
PDC 260	59/148	59/148	90/225	154/385	1500/680	260/25	1
PDC 350	59/148	59/148	90/225	154/385	1500/680	350/32	1
PDC 450	59/148	59/148	90/225	166/415	1700/770	450/42	1
PDC 570	59/148	59/148	90/225	173/432	1900/865	570/53	1
PDC 700	105/263	59/148	96/240	160/400	2400/1090	700/65	2
PDC 900	105/263	59/148	96/240	173/432	2600/1180	900/83	2
PDC 1140	105/263	59/148	96/240	173/432	2800/1270	1140/106	2
PDC 1350	153/382	59/148	96/240	173/432	3200/1455	1350/125	3

Motorized shaker collector general information

Model	HP/KW	Filter surface	Max CFM/LS	Model	HP/KW	Filter surface	Max CFM/LS
		(sq.ft./sq.mt)				(sq.ft./sq.mt)	
PDC-05D-260	5/3.75	260/25	2200/1040	PDC-25D-700	25/32	700/65	6000/2830
PDC-10D-350	10/7.5	350/32	3000/1415	PDC-30D-900	30/22	900/83	7500/3540
PDC-15D-450	15/11.25	450/42	3800/1800	PDC-30D-1140	30/22	1140/106	9500/4485
PDC-20D-570	20/15	570/53	4800/2265	PDC-40D-1350	40/30	1350/125	11000/5190

Manual shaker collector general information

Model	HP/KW	Filter surface	Max CFM/LS	Model	HP/KW	Filter surface	Max CFM/LS
		(sq.ft./sq.mt)				(sq.ft./sq.mt)	
COL-05D-260	5/3.75	260/25	2200/1040	COL-15D-450	15/11.25	450/42	3800/1800
COL-10D-350	10/7.5	350/32	3000/1415	COL-20D-570	20/15	570/53	4800/2265

Notes: Max CFM indicated for either motorized or manual shaker units equals recommended 8 to 1 air to cloth ratio for longer filter life and adequate static pressure in vessel. Higher air to cloth ratio can be achieved and still reach acceptable results and efficiency. Check with factory for accurate engineering design. Fan HP and arrangements will vary as per static pressure in system.

Safety notes: Units should not be used to filter and collect dusts for metal grinding or cutting applications or welding processes. Engineers or designers will need to follow NFPA requirements on dusts collected such as wood, grains, food or pharmaceutical powders or any reactive solids which can create a safety hazard. Eurovac can help with selection of safety devices on dusts listed.

EUROVAC

CANADA
Tel 416-744-4276
Toll Free 1-800-265-DUST (3878)
Fax 416-744-8079
44 Milvan Dr, North York, ON Canada M9L 1Z3

USA
Phone 800-265-3878
Fax 905-738-4603
Web www.eurovac.com
5927 Center Rd, Unit 3, Valley City, OH 44039